

# CipherLab User Guide

## Installation of USB Virtual COM

Version 1.01



# RELEASE NOTES

---

Version	Date	Notes
1.01	Dec. 10, 2009	Supports driver for Windows 7
1.00	Apr. 09, 2009	Initial release

# CONTENTS

---

- RELEASE NOTES ..... - 2 -
- INSTALLING USB VIRTUAL COM DRIVERS ..... 1
  - Install USB Virtual COM Drivers..... 1
  - Check Existing Driver Version..... 7
  - Remove Existing Setup File & Drivers..... 8
    - First, Remove Setup File..... 8
    - Secondly, Remove Drivers..... 9
- USING USB VIRTUAL COM ..... 11
  - Connect Your USB Device..... 11
  - Find out Available COM Ports ..... 13



# INSTALLING USB VIRTUAL COM DRIVERS

---

If you are using USB Virtual COM for the first time, you must install its driver first. Driver version 5.3 or later is required.

## INSTALL USB VIRTUAL COM DRIVERS

1) Run the setup file:

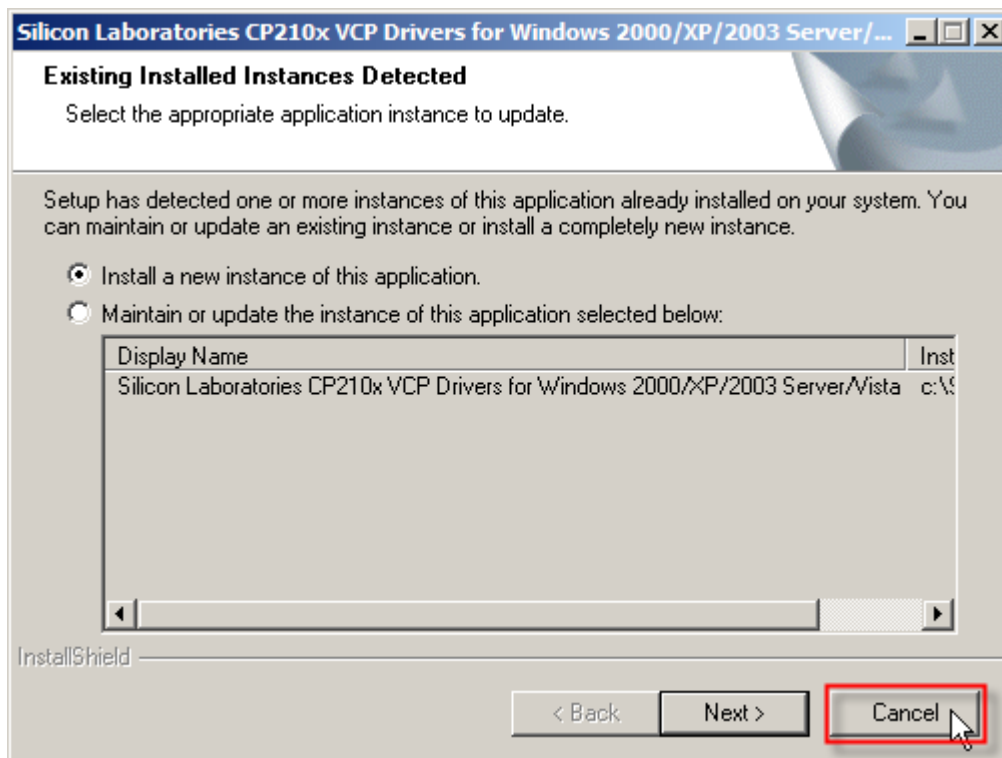
- ▶ CP210x\_VCP\_Win2K\_XP\_S2K3.exe for Windows Vista/2003 Server/XP/2000
- ▶ CP210x\_VCP\_Win7.exe for Windows 7

Note: Driver for Windows 98se is not included in the driver package. Please contact our sales representative for drivers.

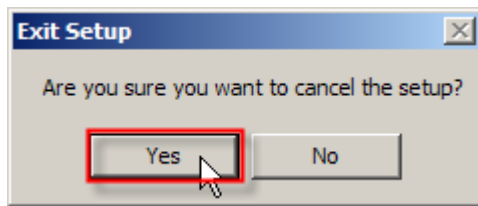
---

The InstallShield Wizard will guide you through how to install drivers for Windows.

However, if there is an existing setup file installed on your computer, you will see the following dialog box. Click [Cancel] to exit setup.

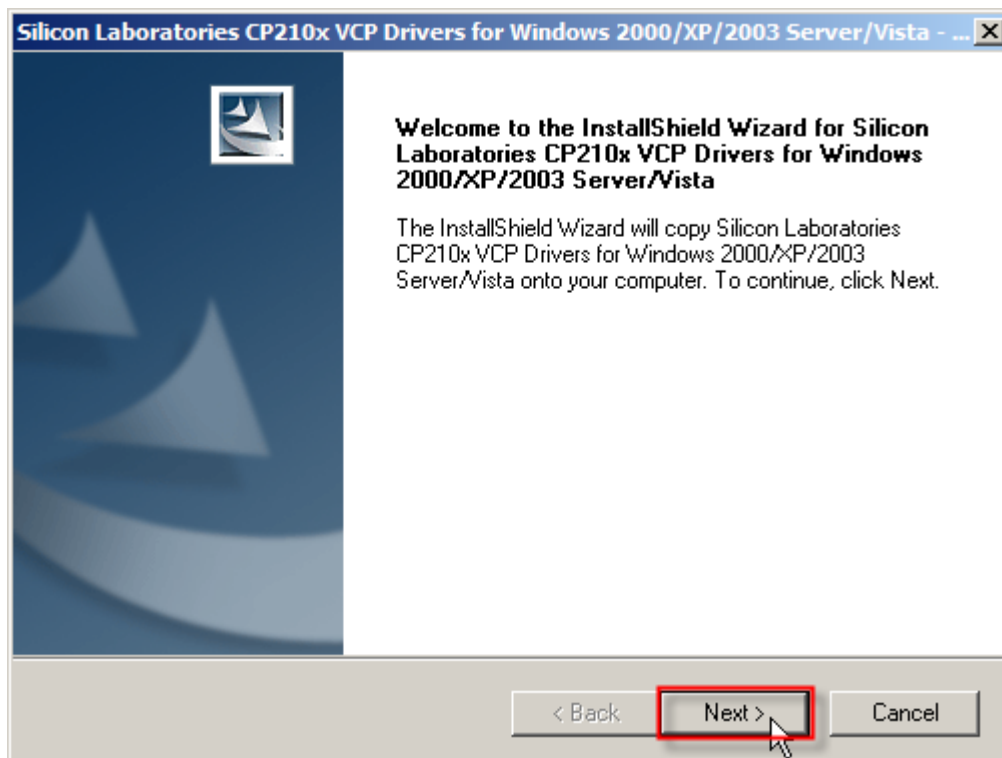


Click [Yes] to cancel the setup.

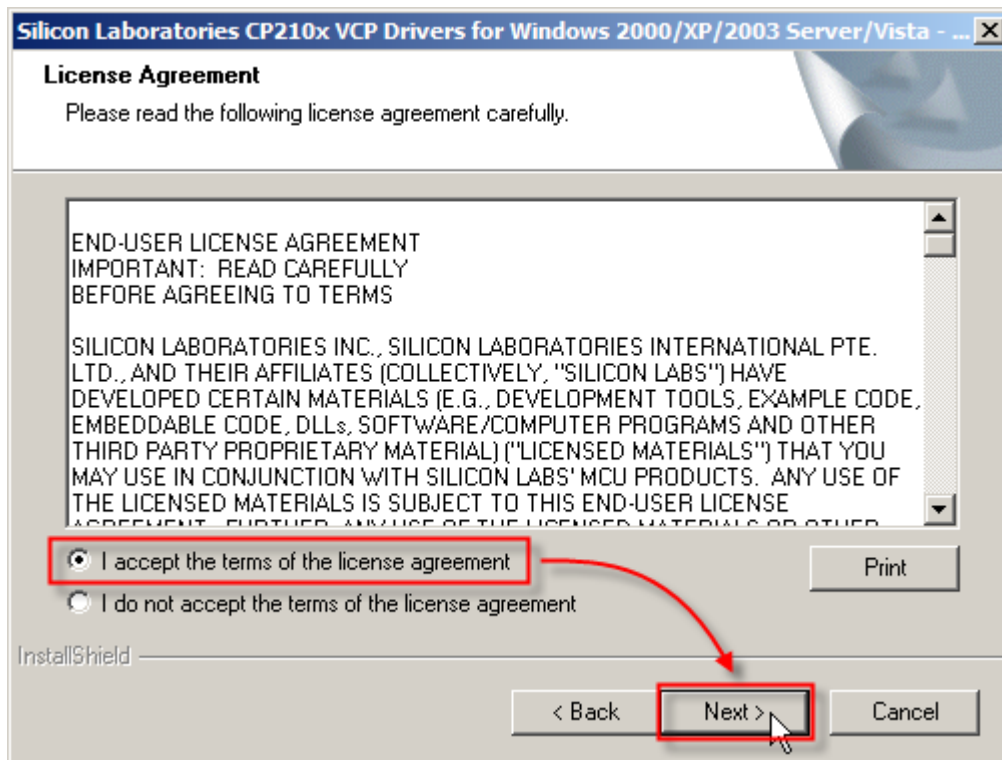


Refer to [Check Existing Driver Version](#) and find out if the driver version is 5.3 or later.

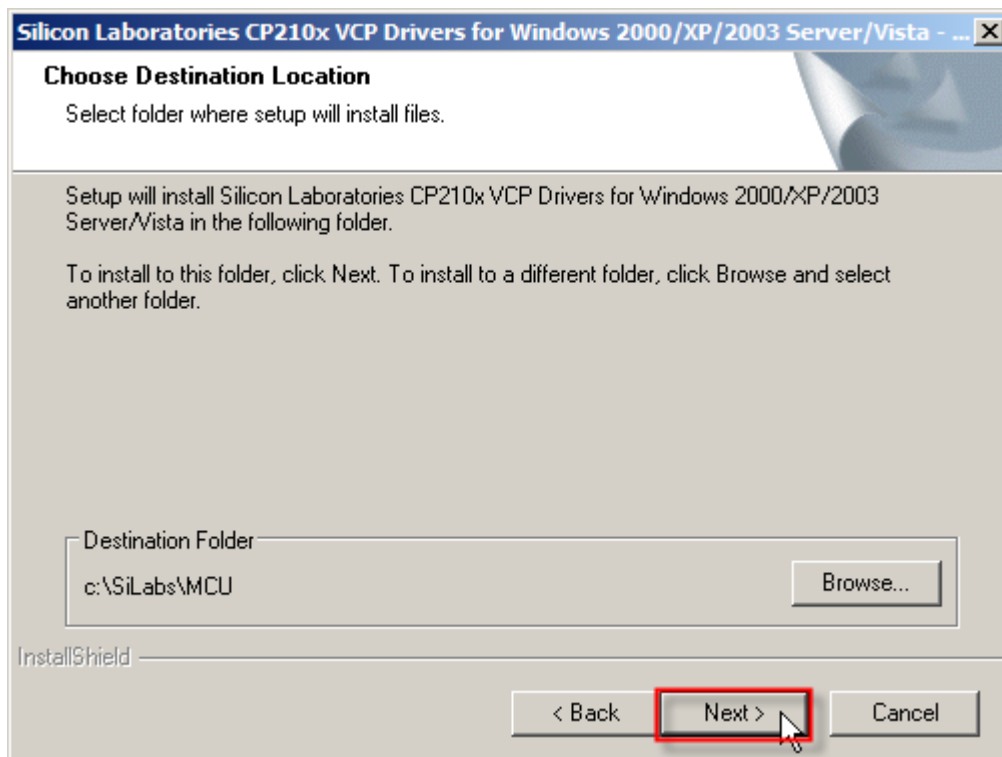
2) Click [Next] to continue.



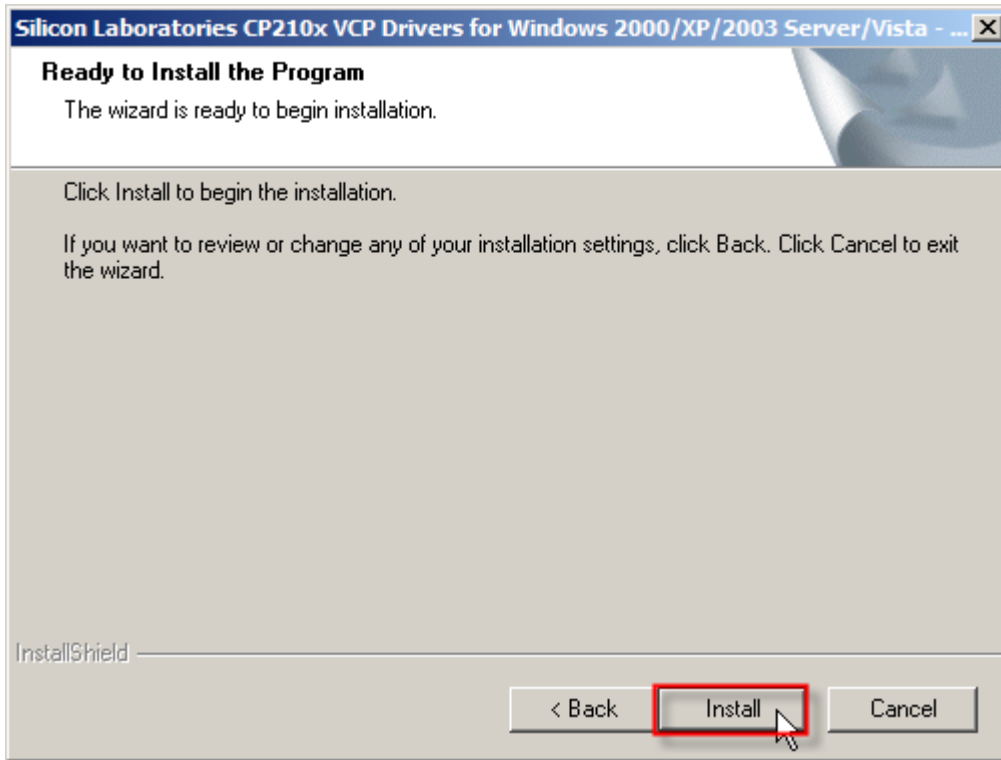
- 3) Read the License Agreement and select to accept the terms. Click [Next] to continue.



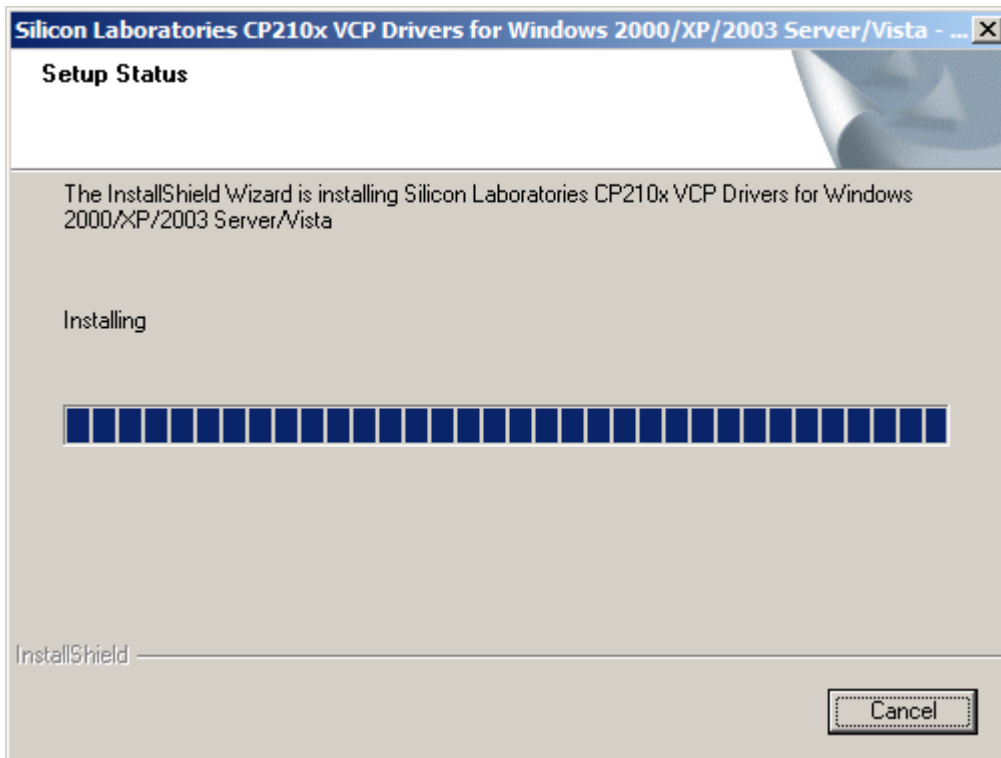
- 4) If you wish to change the destination location, click [Browse...] on the right. Otherwise, click [Next] to continue.



- 5) Click [Install] to begin the installation.

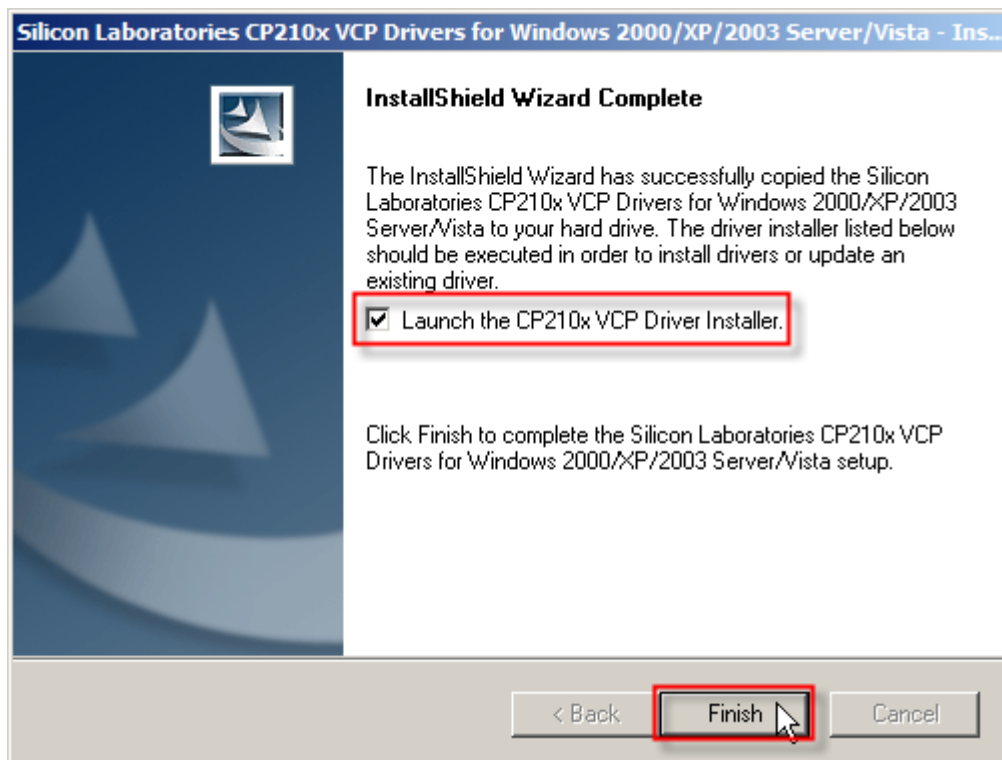


- 6) Wait for several seconds while installing drivers (= copying files to your hard drive).



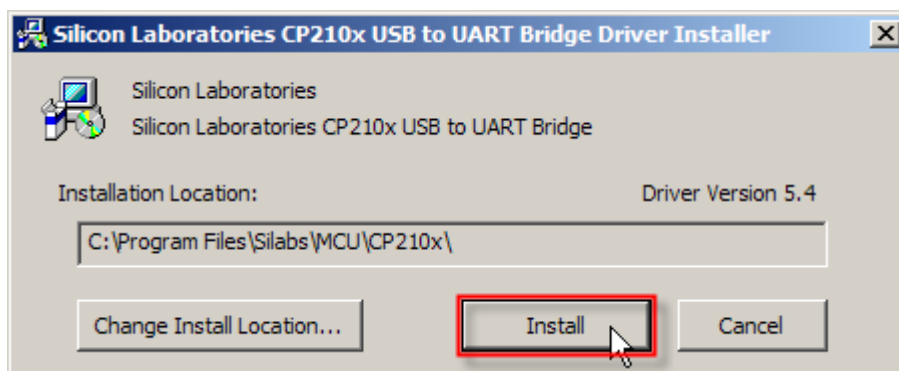


- 7) Click [Launch the CP210x VCP Driver Installer] to install drivers or update an existing driver. Click [Finish] to complete the setup. Otherwise, you can run the installer later from the default install directory.

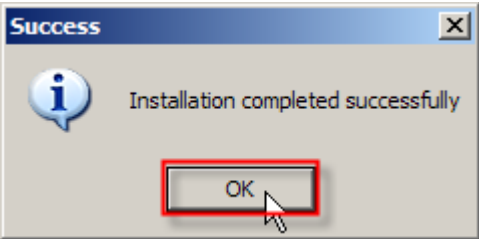


- 8) It will install "CP210x USB to UART Bridge Driver" now.

If you wish to change the destination location, click [Change Install Location...]. Otherwise, click [Install] to continue.

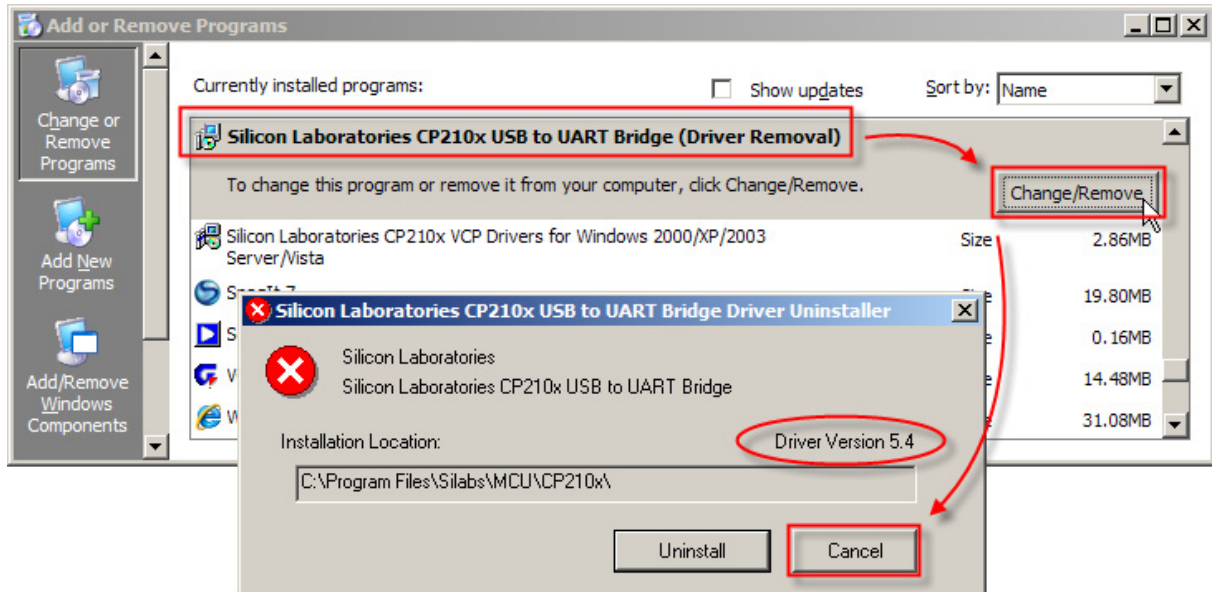


9) Wait for several seconds while installing the drivers. Click [OK] to exit the wizard.



## CHECK EXISTING DRIVER VERSION

Go to **Start | Control Panel | Add or Remove Programs**. If you have installed the driver before, it will be on the program list.

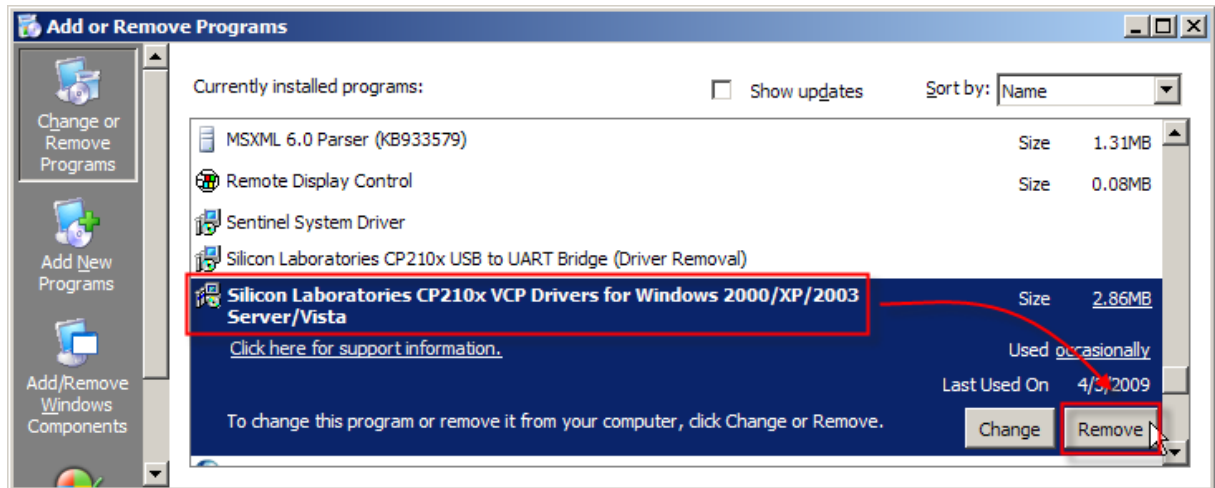


Note: If the existing driver is older than version 5.3, please follow [Remove Existing Setup File & Driver](#).

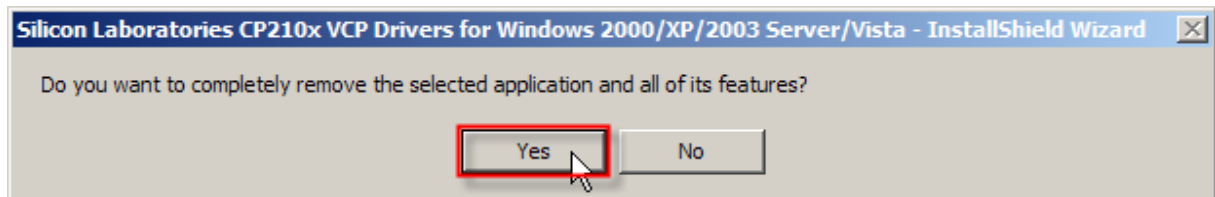
## REMOVE EXISTING SETUP FILE & DRIVERS

### FIRST, REMOVE SETUP FILE

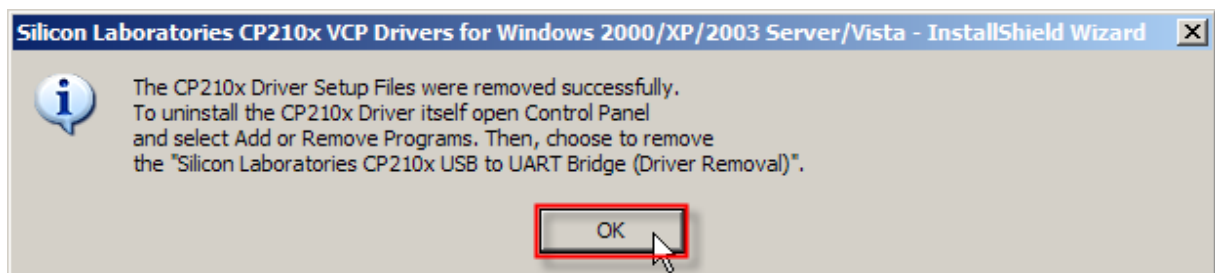
- 1) Select the setup file.
- 2) Click [Remove] to remove the setup file.



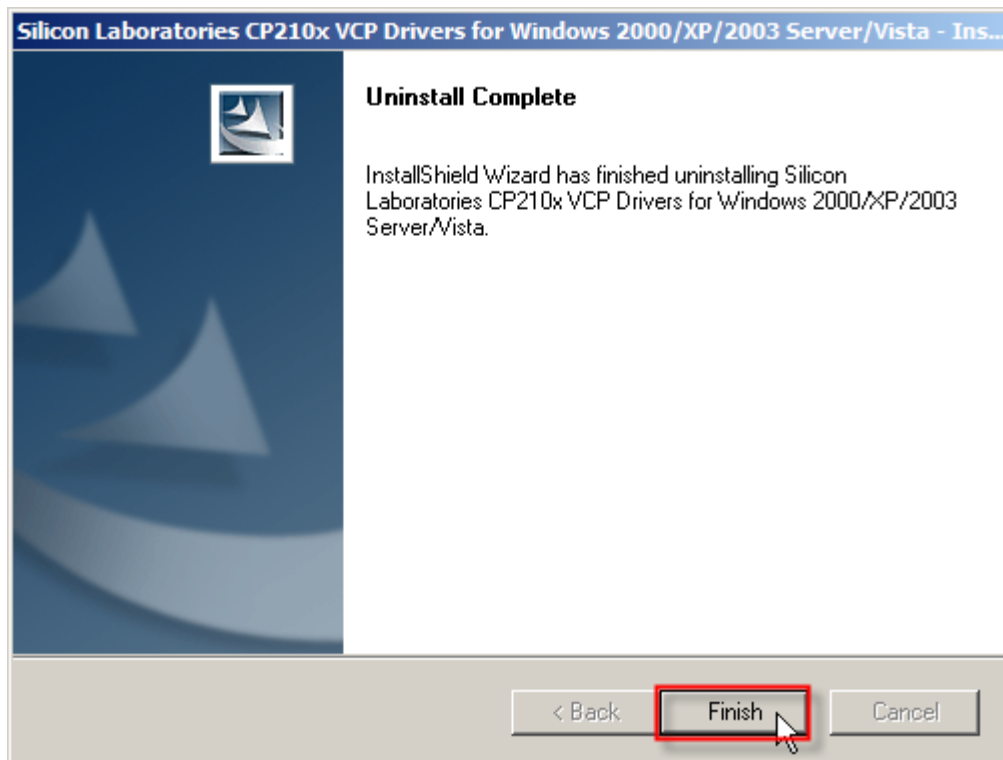
- 3) Wait for several seconds while uninstalling the setup file. Click [Yes].



- 4) Click [OK].

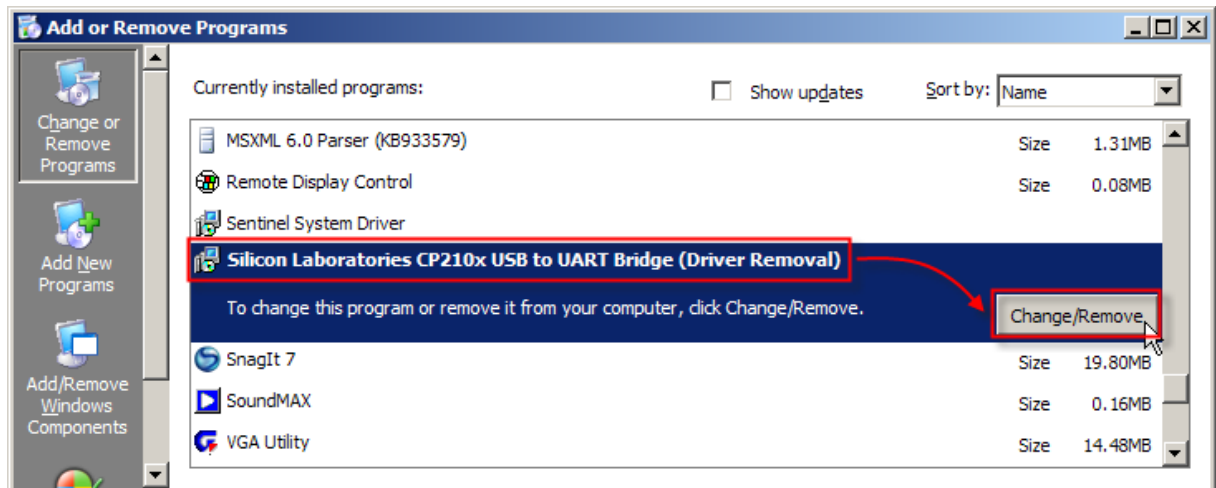


- 5) Click [Finish].

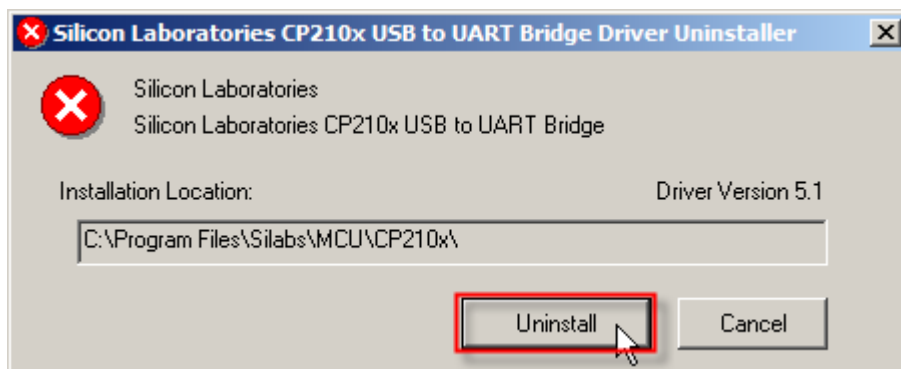


## SECONDLY, REMOVE DRIVERS

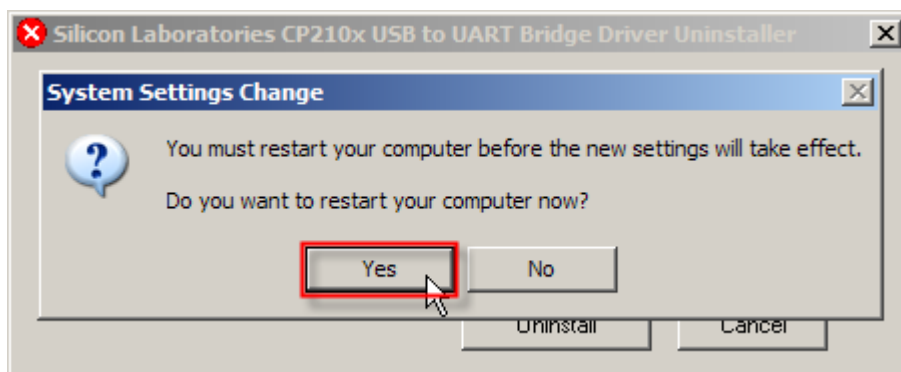
- 6) Select the driver.
- 7) Click [Change/Remove] to remove the drivers.



- 8) Click [Uninstall].



- 9) Click [Yes] to restart your computer.



---

Note: You must restart your computer before the new settings take effect.

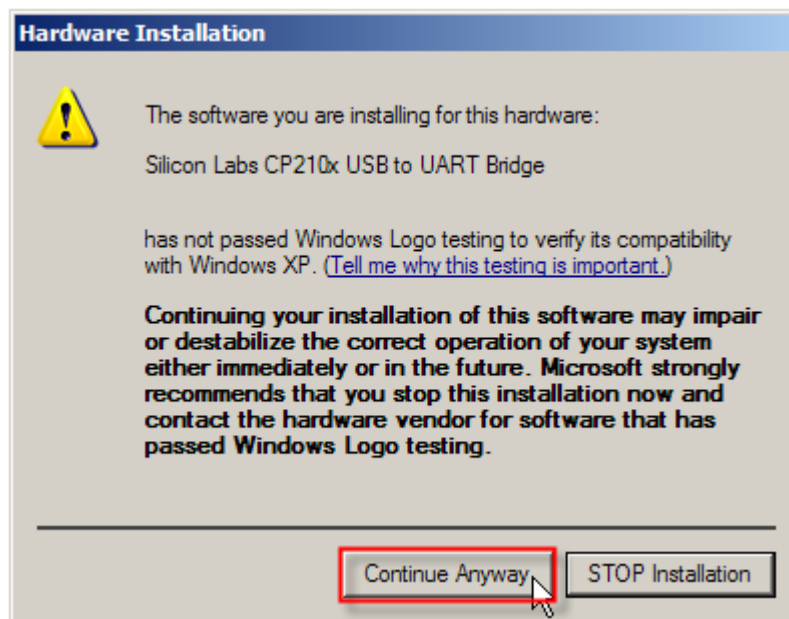
---

# USING USB VIRTUAL COM

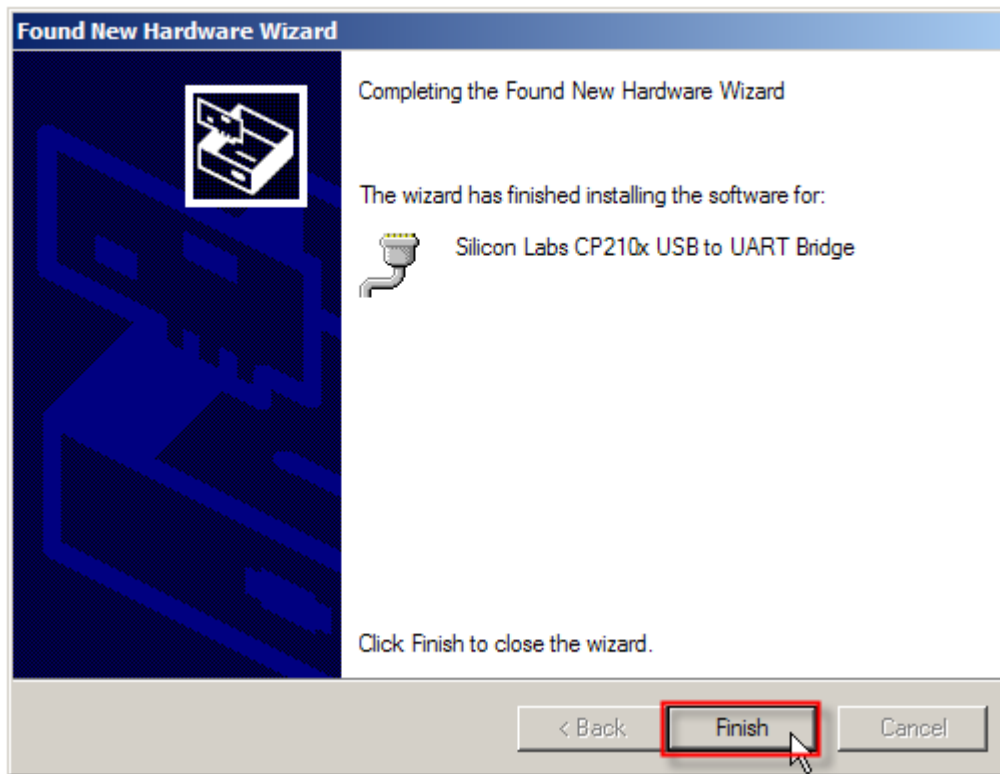
---

## CONNECT YOUR USB DEVICE

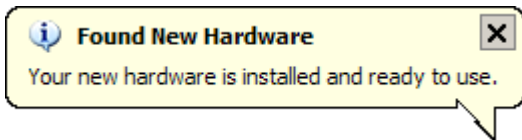
- 1) After having successfully installed the driver to your system, connect your USB device to PC.
- 2) Click [Continue Anyway] to confirm the hardware installation.



- 3) Click [Finish].



- 4) The system recognizes the new hardware. A few seconds later, another message is displayed to inform you that your device is ready for use.

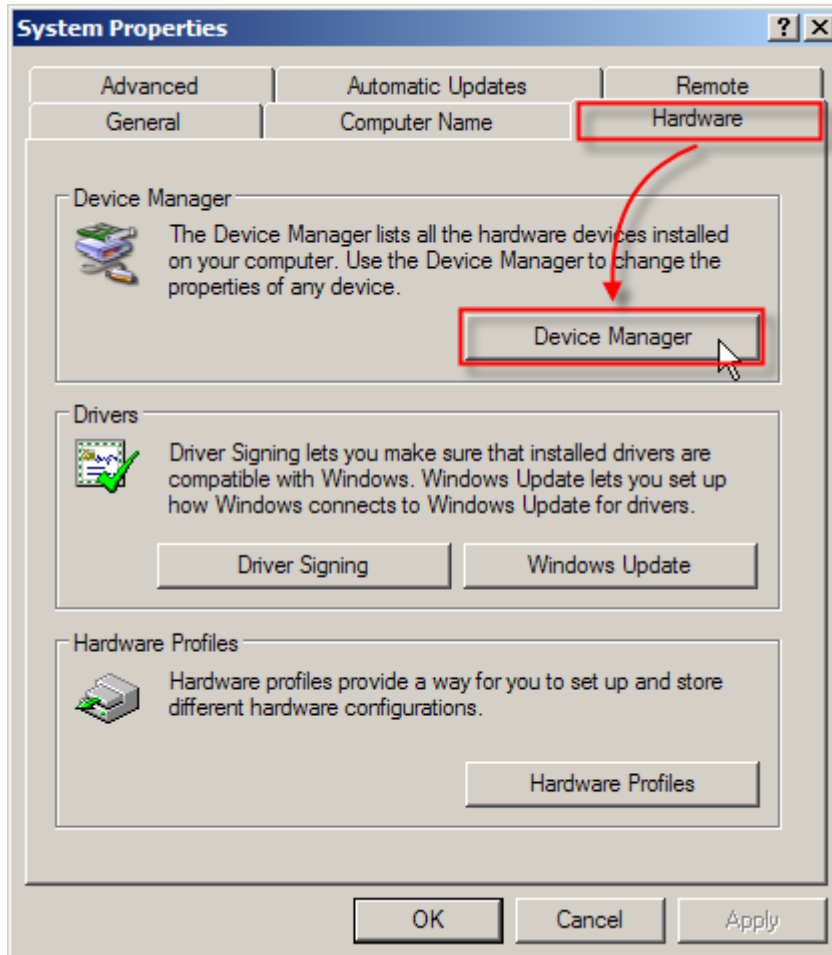




## FIND OUT AVAILABLE COM PORTS

To find out which COM port is assigned to your USB device:

- 1) Go to **Start | Control Panel | System**.
- 2) Click on the Hardware tab.
- 3) Click [Device Manager].



- 4) Click to expand the list of [Ports (COM & LPT)].

